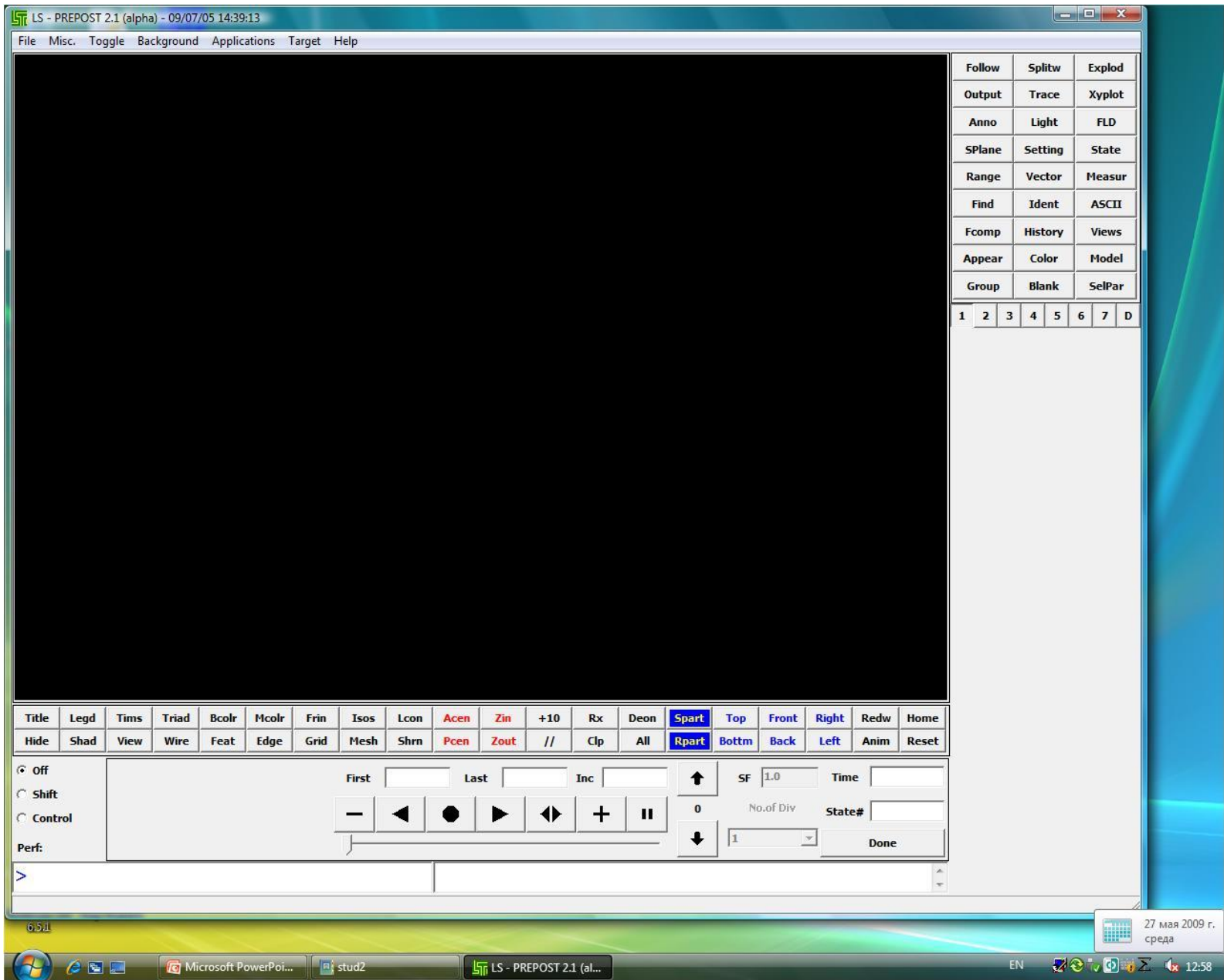


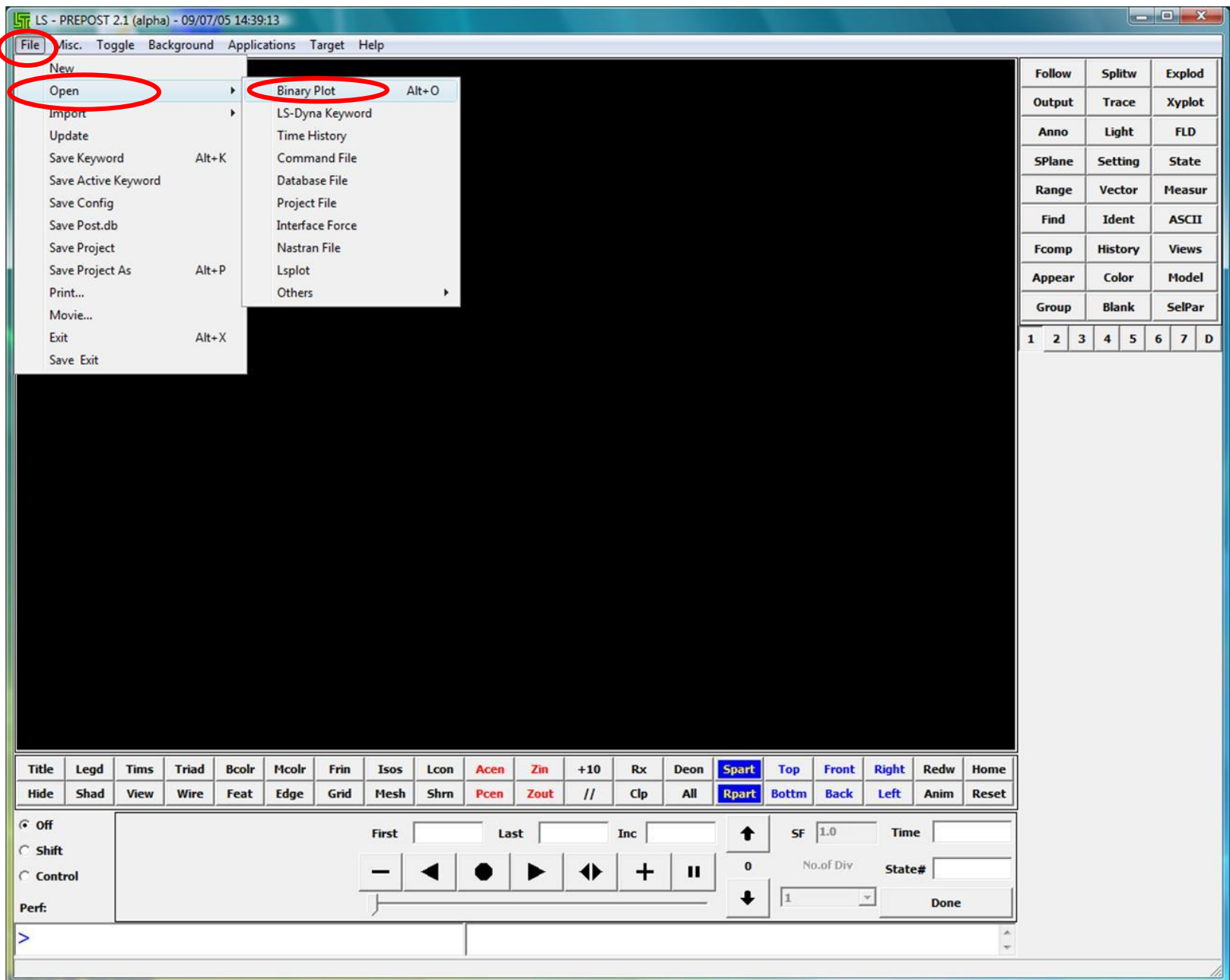


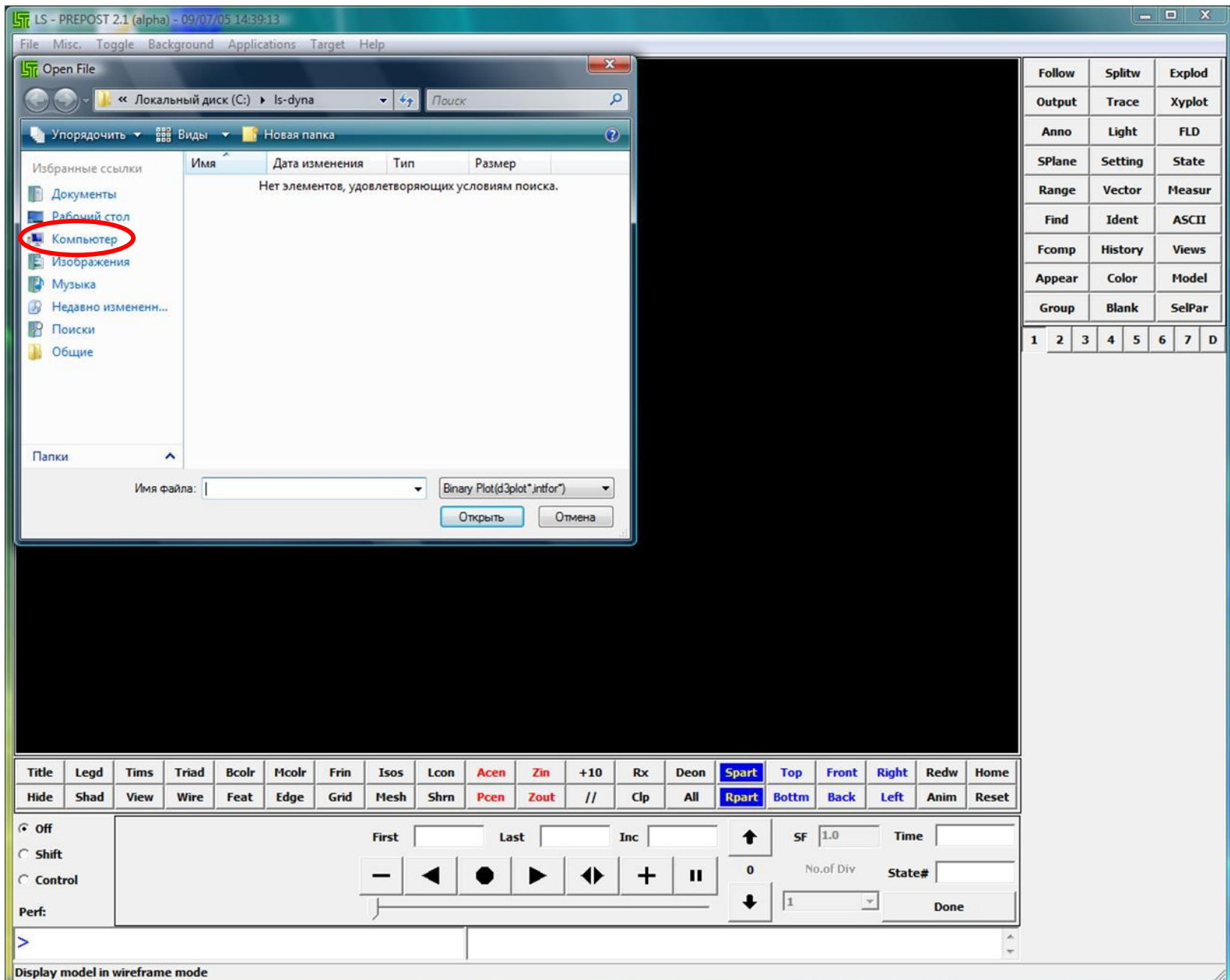
**СУПЕРКОМПЬЮТЕРНЫЙ ЦЕНТР**  
*Южно-Уральского государственного университета*

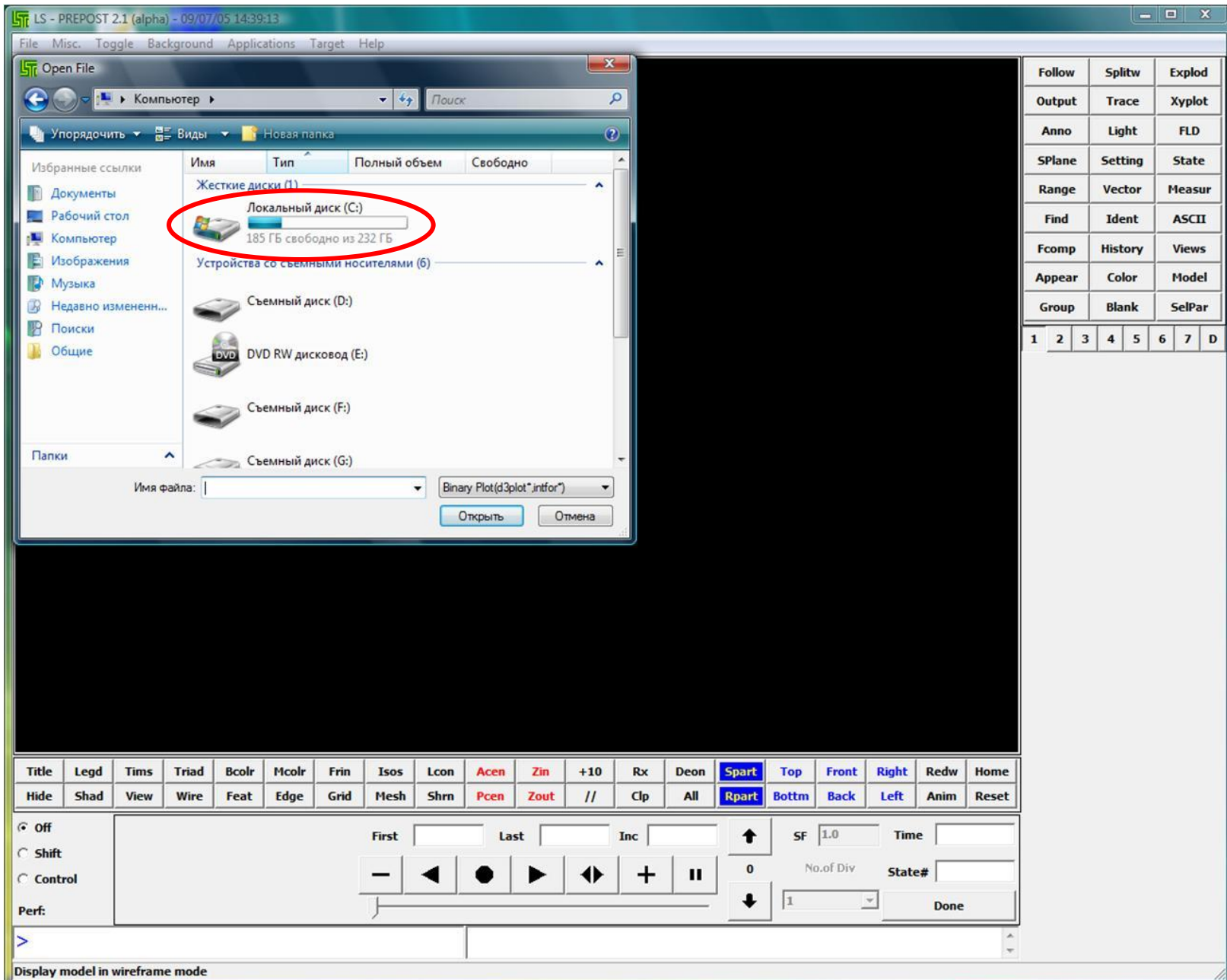
# Визуализация результатов в постпроцессоре LS-DYNA











Follow	Splitw	Explod
Output	Trace	Xyplot
Anno	Light	FLD
SPlane	Setting	State
Range	Vector	Measur
Find	Ident	ASCII
Fcomp	History	Views
Appear	Color	Model
Group	Blank	SelPar

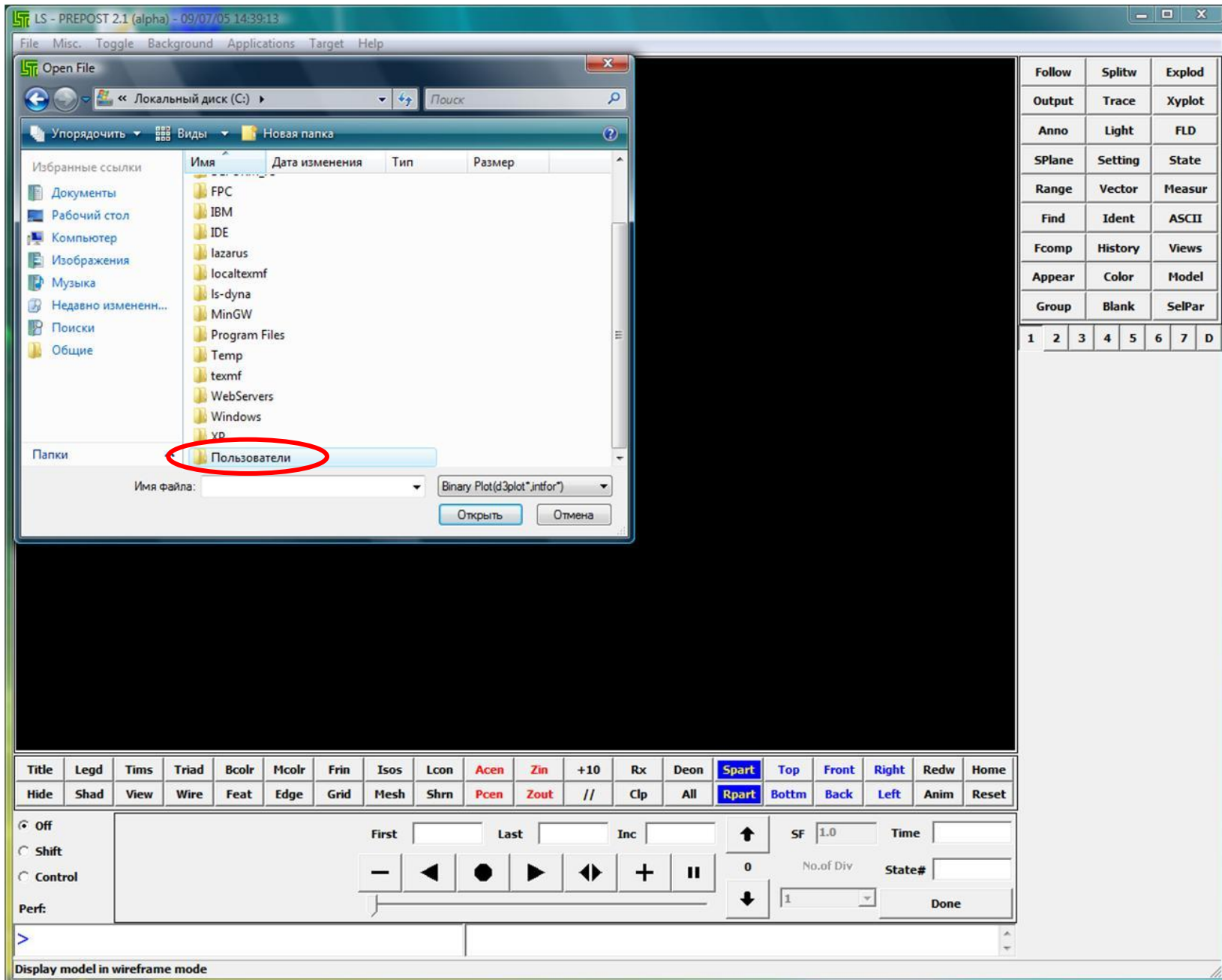
1	2	3	4	5	6	7	D
---	---	---	---	---	---	---	---

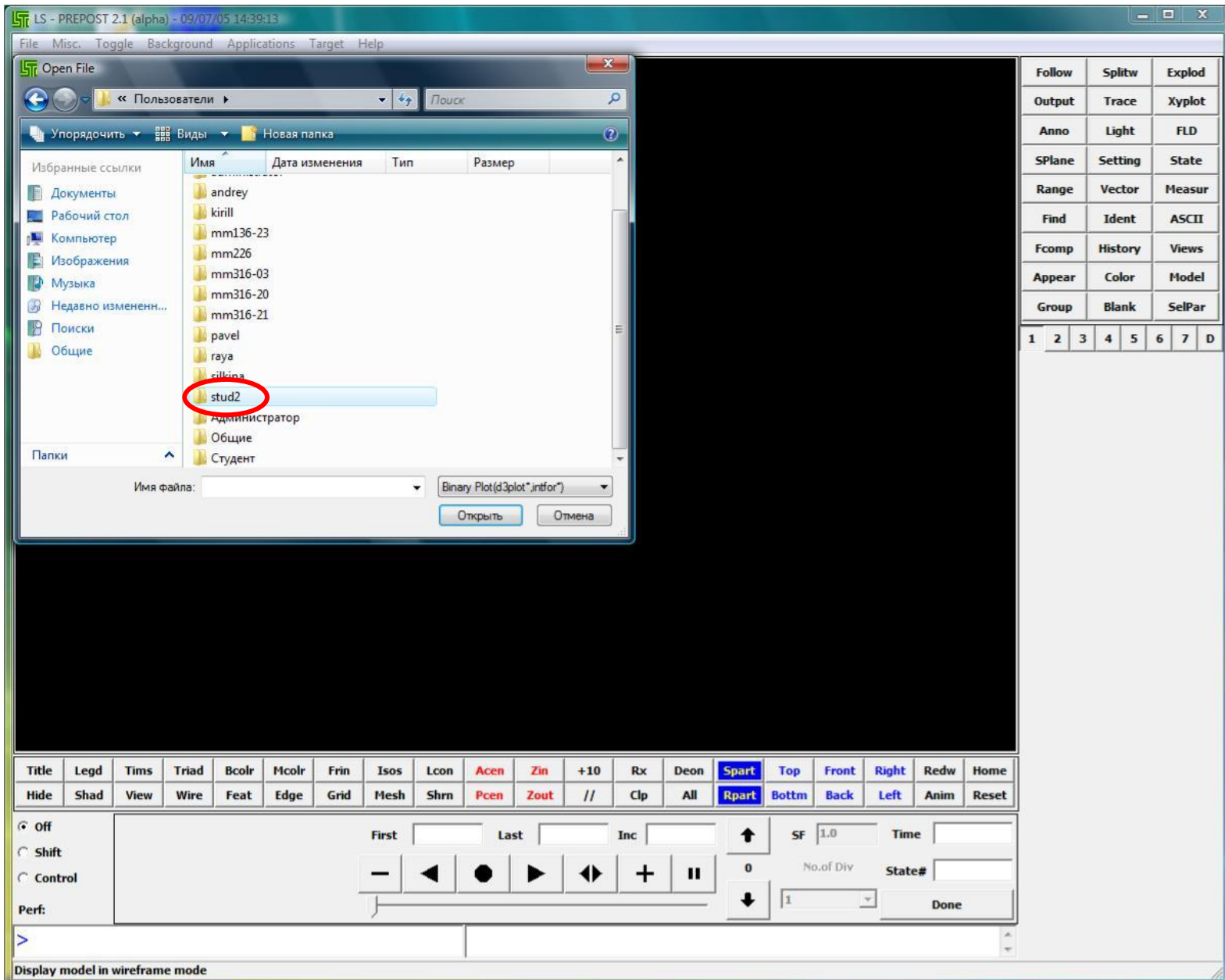
Title	Legd	Tims	Triad	Bcolr	Mcolr	Frin	Isos	Lcon	Acen	Zin	+10	Rx	Deon	Spart	Top	Front	Right	Redw	Home
Hide	Shad	View	Wire	Feat	Edge	Grid	Mesh	Shrn	Pcen	Zout	//	Clp	All	Rpart	Bottm	Back	Left	Anim	Reset

Off  
 Shift  
 Control  
 Perf:

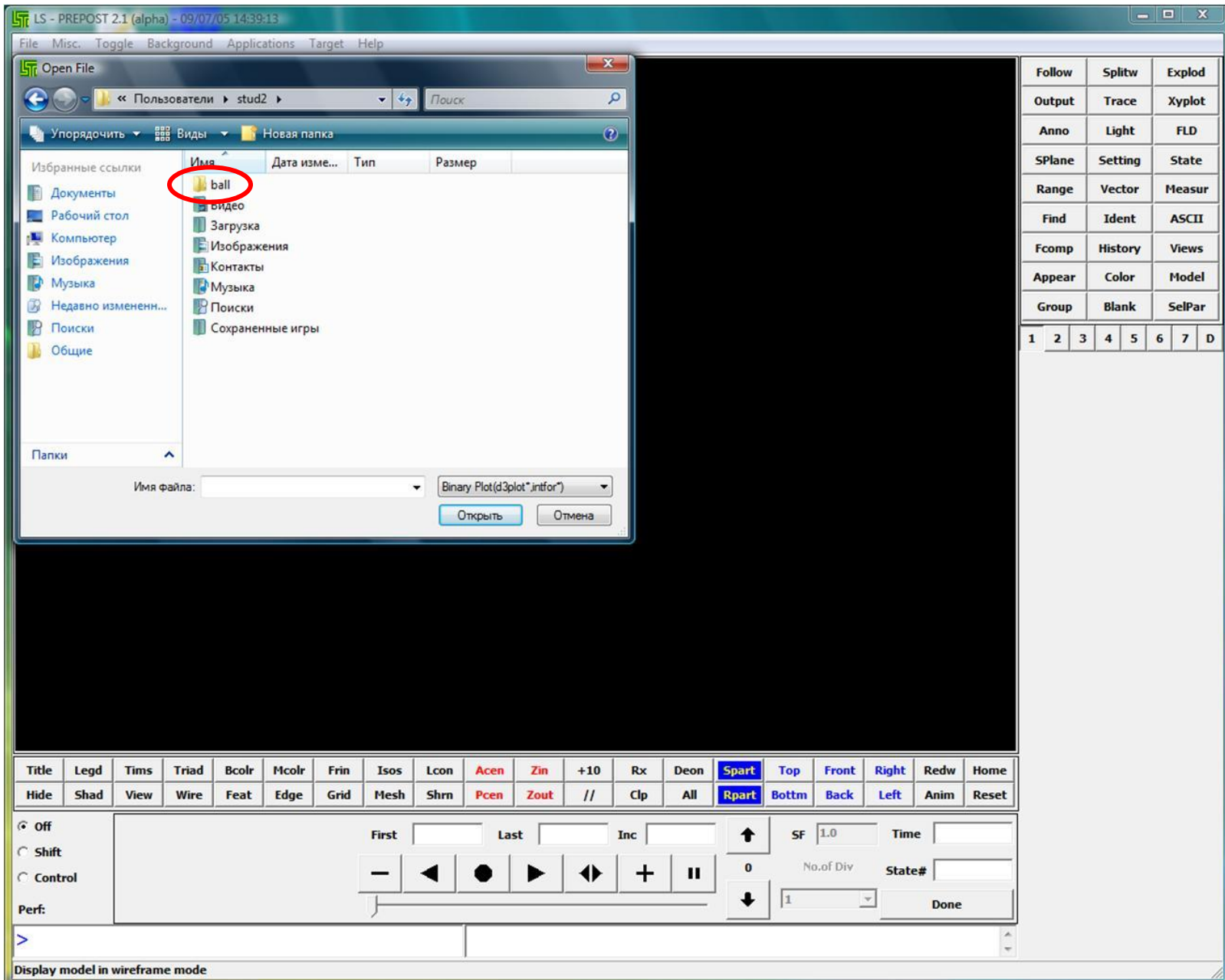
First  Last  Inc

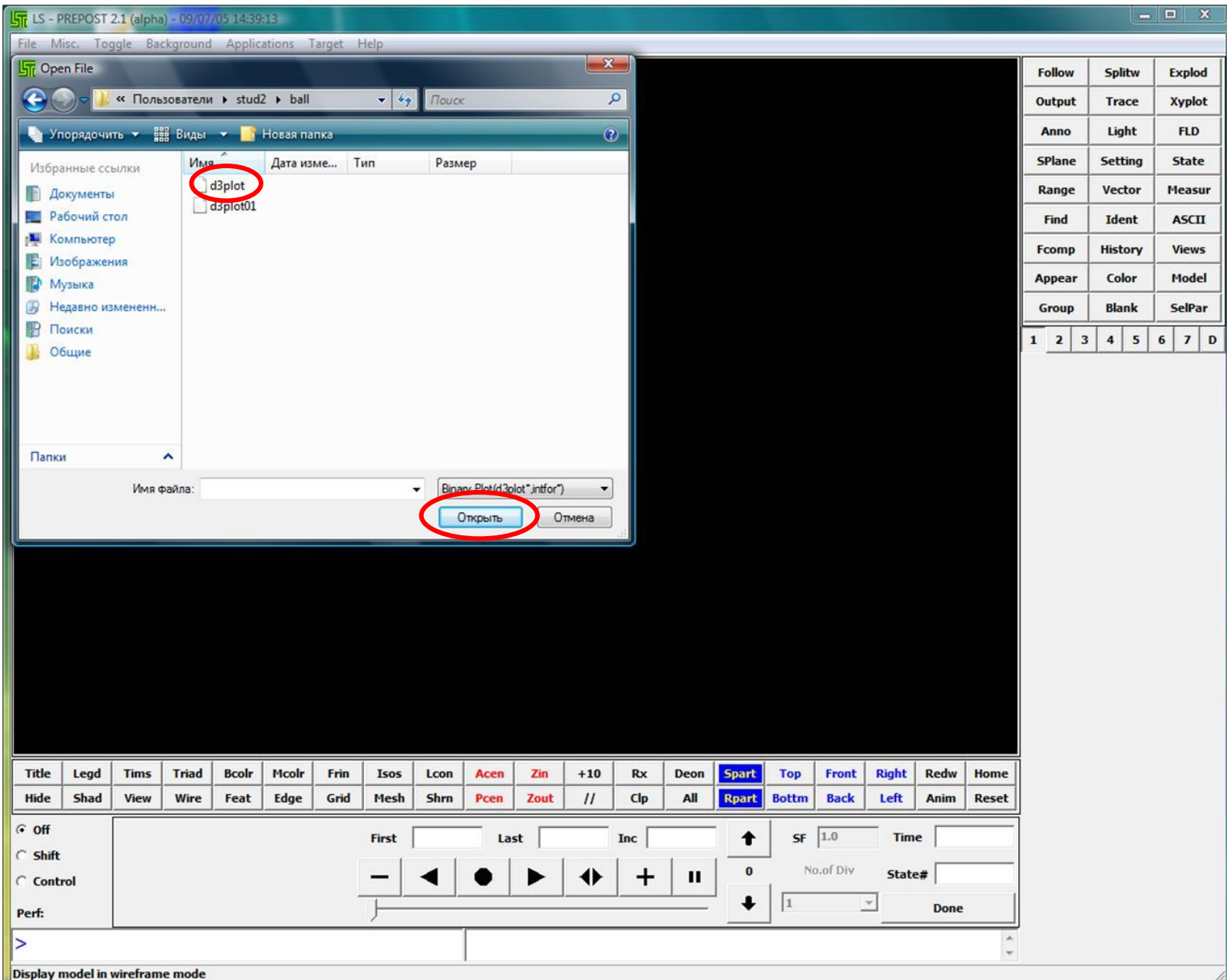
SF 1.0 Time   
 0 No.of Div State#   
  Done











LS - PREPOST 2.1 (alpha) - 09/07/05 14:39:13 LS-DYNA user input

File Misc. Toggle Background Applications Target Help

LS-DYNA user input  
Time =0

Поворот модели:  
кнопка Ctrl + левая кнопка мыши

Comp		history		views			
Appear	Color	Model					
Group	Blank	SelPar					
1	2	3	4	5	6	7	D

Title	Legd	Tims	Triad	Bcolor	Mcolor	Frin	Isos	Lcon	Acen	Zin	+10	Rx	Deon	Spart	Top	Front	Right	Redw	Home
Hide	Shad	View	Wire	Feat	Edge	Grid	Mesh	Shm	Pcen	Zout	//	Clp	All	Rpart	Bottm	Back	Left	Anim	Reset

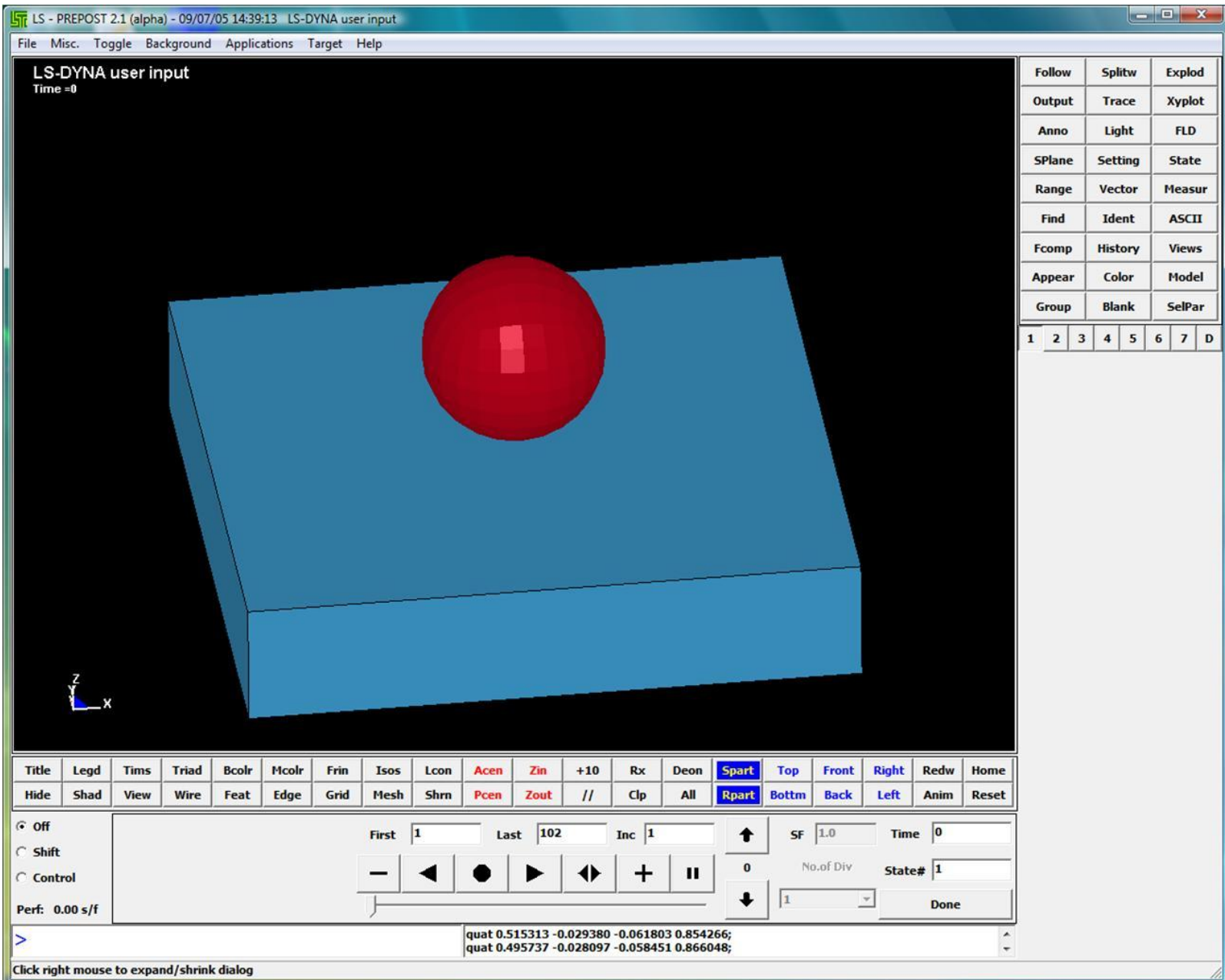
Off  
 Shift  
 Control  
 Perf: 0.01 s/f

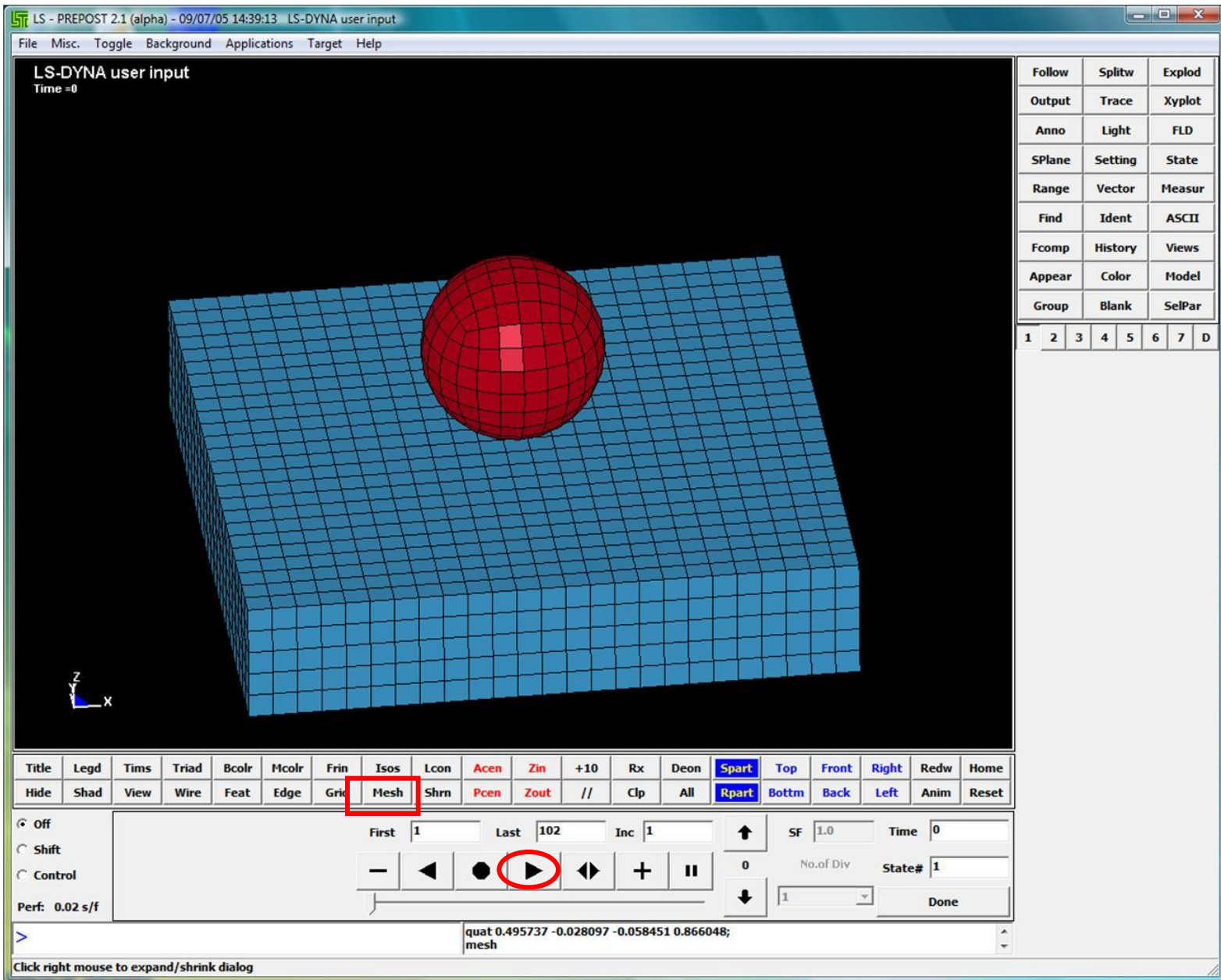
First  Last  Inc

SF  Time   
 No.of Div  State#

Reading binary plot files  
Finished reading model

Enter and set state number





LS - PREPOST 2.1 (alpha) - 09/07/05 14:39:13 LS-DYNA user input

File Misc. Toggle Background Applications Target Help

**LS-DYNA user input**  
 Time = 0.0027999  
 Contours of Effective Stress (v-m)  
 min = 4382.01, at elem# 3368  
 max = 856673, at elem# 3078

Fringe Levels

8.567e+05
7.714e+05
6.862e+05
6.010e+05
5.158e+05
4.305e+05
3.453e+05
2.601e+05
1.748e+05
8.961e+04
4.382e+03

1 2 3 4 5 6 7 D

Follow	Splitw	Explod
Output	Trace	Xyplot
Anno	Light	FLD
SPlane	Setting	State
Range	Vector	Measur
Find	Ident	ASCII
Fcomp	History	Views
Appear	Color	Model
Group	Blank	SelPar

Fringe Component

Md1	x-stress
	y-stress
	z-stress
	xy-stress
	yz-stress
	zx-stress
	plastic strain
	pressure
	<b>von mises stress</b>
Strain	1st-prin dev stress
	2nd-prin dev stress
	3rd-prin dev stress
Misc	max shear stress
	1st-principal stress
	2nd-principal stress
	3rd-principal stress

Title	Legd	Tims	Triad	Bcolr	Mcolr	Frin	Isos	Lcon	Acen	Zin	+10	Rx	Deon	Spart	Top	Front	Right	Redw	Home
Hide	Shad	View	Wire	Feat	Edge	Grid	Mesh	Shrn	Pcen	Zout	//	Clp	All	Rpart	Bottm	Back	Left	Anim	Reset

Off  
 Shift  
 Control

Perf: 0.01 s/f

First 1 Last 102 Inc 1

Navigation buttons: Left, Home, Right, End, Stop, Play, Pause, Refresh

SF 1.0 Time 0.0027999

No. of Div 0 State# 57

1 Done

state 57;  
state 57;

Click right mouse to expand/shrink dialog

LS - PREPOST 2.1 (alpha) - 09/07/05 14:39:13 LS-DYNA user input

File Misc. Toggle Background Applications Target Help

**LS-DYNA user input**  
 Time = 0.0027999  
 Contours of Max Prin Strain  
 min = 2.5468e-08, at elem# 604  
 max = 0.182352, at elem# 3077

Fringe Levels

1.824e-01
1.641e-01
1.459e-01
1.276e-01
1.094e-01
9.118e-02
7.294e-02
5.471e-02
3.647e-02
1.824e-02
2.546e-08

Follow Splitw Explod  
 Output Trace Xyplot  
 Anno Light FLD  
 SPlane Setting State  
 Range Vector Measur  
 Find Ident ASCII  
 Fcomp History Views  
 Appear Color Model  
 Group Blank SelPar

1 2 3 4 5 6 7 D

Fringe Component

Md1	x-strain
	y-strain
	z-strain
	xy-strain
	yz-strain
	xz-strain
	max-principal strain
	2nd-principal strain
	min-principal strain
	effective strain(v-m)

Stress  
 Ndv  
 Result  
 Misc  
 Infin  
 Green  
 Almans  
 S.Rate  
 Residu  
 FLD  
 Beam  
 CFD  
 User  
 Apply  
 Frin  
 Max  
 Glob

Strain

Title	Legd	Tims	Triad	Bcolr	Mcolr	Frin	Isos	Lcon	Acen	Zin	+10	Rx	Deon	Spart	Top	Front	Right	Redw	Home
Hide	Shad	View	Wire	Feat	Edge	Grid	Mesh	Shrn	Pcen	Zout	//	Clp	All	Rpart	Bottm	Back	Left	Anim	Reset

Off  
 Shift  
 Control

Perf: 0.01 s/f

First 1 Last 102 Inc 1

SF 1.0 Time 0.0027999

No. of Div State# 57

1 Done

fringe 69  
 pfringe

Select a fringe component

